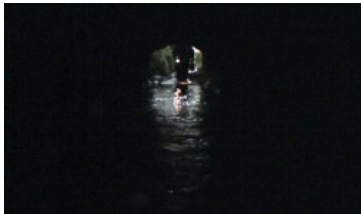


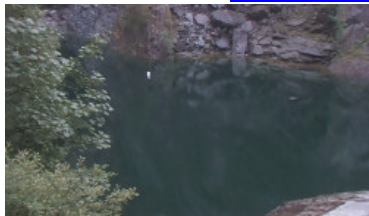
Canary Divers Trips

Hodge Close



July saw Canary Divers return to Hodge Close for a couple of deep (28m) dives and a night dive.

After walking through the tunnel to enter the quarry and climbing down the scaffold ladder, the diving did not disappoint. If you are interested in diving Hodge Close then please contact us at info@canarydivers.com



For more pictures of Hodge Close check out the Canary Divers website and click the galleries section.

St. Abbs

July also saw Canary Divers venturing to St. Abbs again. The diving was, as always, spectacular. Diving over the weekend of 8th and 9th July on a combination of wrecks and reefs.



Conger Reef

The two wrecks we dived over the weekend were the East Nuek and President. The East Nuek is a little dived wreck and there is not a lot of it left except for the large boiler and one side of the hull protruding from the sea bed.

Trips - continued

The current was minimal and temperatures low (10 degrees). The president was closer to shore lying in 12m. The president went ashore and has been broken up by the rocks. The main attraction here is the huge boiler which lies just off the rock. The rest of the superstructure appears to have been broken up now and lies splattered across the sea bed. Many forms of soft coral have claimed this as their home and so the natural life is fantastic.



Once the wreck has been examined it is recommended to head off away from the coast and enjoy the natural rock formations at around 16m-18m. These canyons harbour a wealth of natural life and can easily provide entertainment for any dive



Forthcoming trips

There are a few places left on the trip to the Farne islands in October 2006. B&B accommodation and 1 day boat diving. Places are strictly limited so book early.

